

Institute of Parallel and Distributed Systems

University of Stuttgart
Universitätsstraße 38
D-70569 Stuttgart

Bachelorarbeit Nr. TODO

Bootstrapping ontology-based data access specifications from relational databases

Philipp Martis

Course of Study: Informatik

Examiner: PD Dr. Holger Schwarz

Supervisor: M. Sc. Leif Harald Karlsen

Commenced: 23rd of November 2015

Completed: 24th of May 2016

CR-Classification: D.0

Abstract

Nach der Titelseite des Berichtes und dem Aufgabenblatt soll das Wesentliche aus dem Inhalt der Arbeit in wenigen Sätzen zusammengefasst werden. Diese Übersicht soll keine Formeln und möglichst keine Literaturhinweise enthalten.

Kurzfassung

Nach der Titelseite des Berichtes und dem Aufgabenblatt soll das Wesentliche aus dem Inhalt der Arbeit in wenigen Sätzen zusammengefasst werden. Diese „Übersicht“ soll keine Formeln und möglichst keine Literaturhinweise enthalten.

Contents

Abstract	iv
Kurzfassung	v
Contents	vi
List of figures	vii
List of tables	viii
1 Introduction	1
1.1 Motivation	1
1.2 Approach	1
1.3 Requirements and goals	2
2 Background and related work	3
2.1 Background	3
2.2 Related work	3
3 The OBDA Specification Language (OSL)	4
3.1 Specification	4
4 The db2osl software	8
4.1 Functionality	8
4.1.1 Description	8
4.1.2 Summary	9
4.2 Interface and usage	10
4.2.1 User interaction and configuration	10
4.2.2 Integration into systems	13
4.3 The bootstrapping process	15
4.4 Architecture	15
4.4.1 Libraries used	15
4.4.2 Coarse structuring	15
4.4.3 Fine structuring	19
4.5 Tools employed	25
4.6 Code style	25
4.6.1 Comments	25
4.6.2 “Speaking code”	25
4.6.3 Robustness against incorrect use	27
4.6.4 Classes	28

4.6.5 Packages	30
4.7 Numbers and statistics	31
4.8 Versioning	31
5 Summary and future work	32
5.1 Summary	32
5.2 Future work	32
Appendix	34
Bibliography	35

List of Figures

4.1	Package dependencies in DB2OSL	17
4.2	Package dependencies in earlier versions of DB2OSL	18
4.3	Class hierarchies in DB2OSL	23
4.4	ColumnSet class hierarchy in DB2OSL – simplified	24

List of Tables

3.1	OWL individual IRIs in OSL	5
3.2	OWL class membership of map representations in OSL	5
3.3	OWL property IRIs in OSL	7
4.1	Command-line arguments in DB2OSL – descriptions	12
4.2	Command-line arguments in DB2OSL – default values	13
4.3	Descriptions of the packages in DB2OSL	15
4.4	Class attachment to packages in DB2OSL	20
4.5	Standalone classes in DB2OSL	23

1 Introduction

Sie führt in die Problematik ein, skizziert die Motivation und Zielsetzung sowie das geplante Vorgehen und die angestrebten Ergebnisse und sollte ca. 1 - 2 Seiten umfassen.

1.1 Motivation

As estimated in 2007 [HPZC07], publicly available databases contained up to 500 times more data than the static web and roughly 70 % of all websites were backed by relational databases back then. As hardware has become cheaper yet more powerful, open source tools have become more and more widespread and the web has gotten more and more dynamic and interactive, it's likely that these numbers have even increased since then. This makes the publication of available data in a structured, machine-processable form and its retrieval with eligible software (Ontology based data access, OBDA) an interesting topic. This vision emerged as early as TODO and was entitled with the term “semantic web” by Tim Berners-Lee [BLHL01]. Definitely, the automatic translation of relational databases to RDF or similar representations of structured information is an integral part of the success of the semantic web [HPZC07]. This automatic translation process is commonly called “bootstrapping”.

Early work regarding the development of bootstrapping systems includes TODO. Today, the pure translation process is a relatively well understood topic, ranging from the rather simple direct mapping approach [W3C12] to TODO. On the other hand, the handling of the complexity introduced by these approaches and the use of sophisticated tools to perform various related tasks meanwhile has become a significant challenge in its own right [SGH+15]. Besides the parametrization of the tools in use, this includes the management of the several kinds of artifacts accruing during the process, possibly needed in different versions and formats for the use of different tools and output formats, while also taking changing input data into account [SGH+15]. Skjæveland and others therefore suggested an approach using a declarative description of the data to be mapped, concentrating in one place all the information needed to coordinate the bootstrapping process and to drive the entire tool chain [SGH+15].

1.2 Approach

This thesis describes the development of a specification language to serialize the declarative specification of the bootstrapping process and of a software to in turn bootstrap it from a relational database schema. After the tasks they accomplish, the specification language was called “OBDA Specification Language” (“OSL”) and the software bootstrapping the specification was called “db2osl”.

Using a declarative specification makes the entire bootstrapping process a two-step-procedure: First, the OBDA specification is derived from the database schema using DB2OSL. It specifies the actual bootstrapping process in a very general way, so it only has to be recreated when the database schema changes. The second step is to use the OBDA specification to coordinate and drive the actual bootstrapping process. The development of a software that uses the OBDA specification to perform this second step currently is subject to ongoing work. It will be able to be parameterized accordingly to support different output formats, tools, tool versions and application ranges.

TODO: illustration of overall process

1.3 Requirements and goals

The final system shall be able to cleanly fit into existing bootstrapping systems while being easy to use, taking the burden of dealing with OSL specifications manually from its users instead of adding even more complexity to the process. To achieve the former goal, use of existing tools, languages and conventions was made wherever possible. To fit into the environment used in the OPTIQUE project TODO it is ultimately part of, JAVA was used for the bootstrapping software. Care was taken to design it to be modular and flexible, making it usable not only as a whole but also as a collection of independent components possibly serving as the basis for a program library in the future. To further support this aim TODO and to make the software more easily understandable and extensible, it was documented carefully and thoroughly.

As the software will be maintained by diverse people after its development and will likely be subject to changes, general code quality was also an issue to consider. Following good object-oriented software development practice TODO, real world artifacts like database schemas, database tables, columns, keys, OBDA specifications et cetera were modeled as software objects, provided with a carefully chosen set of operations to manipulate them and make them collaborate. Scarce, informative comments were inserted at places of higher complexity and to expose logical subdivisions, but care was taken to use “speaking code” in favor of rampant comments. Complex, misleading and hard-to-use interfaces were avoided wherever possible. External software libraries employed were chosen to be stable, specific, well structured, publicly available and ideally in wide use.

2 Background and related work

Bei experimentellen Untersuchungen sind die benutzte Versuchsanordnung sowie Messanordnungen und Messverfahren ausführlich zu beschreiben. Analog sind die Grundlagen eventuell verwendeter oder erweiterter Berechnungsprogramme zusammenfassend darzustellen. Bei übernommenen Formeln, Bildern, Tabellen und bei Zitaten ist stets die Quelle durch den Namen des Verfassers und die zugehörige Nummer im Literaturverzeichnis anzugeben (z.B. [SGH⁺15])

Nam eu dolor a nisl faucibus suscipit. Nulla interdum sapien id lectus. Curabitur fringilla pulvinar nibh. Aenean porta luctus purus. Cras dictum mauris quis velit. Nullam pharetra pede at risus. Nullam orci sapien, porttitor eu, iaculis et, bibendum ultricies, ipsum. Mauris eget justo. Donec semper auctor tortor. Mauris a ante et magna facilisis mollis. Proin sem turpis, interdum quis, fermentum aliquet, faucibus scelerisque, quam. In mi nibh, facilisis eu, euismod sed, luctus ut, sapien. Etiam ut dui eget libero dapibus elementum.

Nulla ut felis et libero tempus luctus. Praesent vitae velit. Vivamus pharetra pharetra sem. Morbi id mauris. Ut sem mauris, fermentum non, interdum eu, nonummy non, nunc. Aenean a sem et odio ornare dictum. Phasellus fermentum justo quis justo. Aenean et felis. Vestibulum ante ipsum primis in faucibus orci luctus et ultrices posuere cubilia Curae; Curabitur faucibus ornare augue. Nullam blandit pellentesque odio. Vestibulum tempor tempor ante. Etiam scelerisque elementum diam. Vestibulum enim sem, dictum et, rhoncus vitae, ullamcorper ut, dolor. Sed diam.

Sed dignissim diam vel erat. Pellentesque ac lacus sed dui vehicula tristique. Curabitur justo sapien, convallis in, faucibus nec, hendrerit eu, sapien. Quisque imperdiet lacus vitae lacus. Vestibulum aliquet rutrum enim. Fusce et leo. Ut id dui non felis rhoncus laoreet. Nullam ipsum. Lorem ipsum dolor sit amet, consectetur adipiscing elit. Cras et dolor. Cum sociis natoque penatibus et magnis dis parturient montes, nascetur ridiculus mus.

2.1 Background

2.2 Related work

3 The OBDA Specification Language (OSL)

TODO: aims, proceeding, structure As described in [SGH⁺15], an OBDA specification consists of several types of maps, all containing data entries and links to other maps. This fits perfectly into the environment of ontologies and OWL, with data properties being the obvious choice to represent contained data entries and object properties being the obvious choice to represent links between maps. Also, a potential user probably to some degree is familiar with this environment, since this is what the bootstrapping process at the end amounts to.

Therefore, an ideal base for the OBDA Specification Language is OWL, being a solid framework for data and constraint representation with a high degree of software support, while imposing only a minimum of introductory preparation to the user.

Another advantage of this approach is that the specification is kept compact and focused on the entities that the language has to represent rather than primarily dealing with technical details. In particular, many of those details can be formulated as OWL restrictions in a header ontology demanded to be imported by documents conforming to the OSL specification. Thus, they are not only specified precisely but they are also stipulated in a machine-readable form for which tools are widely available, enabling the user to check many aspects of an OSL document for conformity with minimal effort.

3.1 Specification

¹ An OSL document is a valid OWL 2 document (as described in [W3C12]) containing individuals and data that represent the OBDA Specification, as well as OWL properties that connect them. The individuals and OWL properties are recognized and mapped to their roles by their IRIs.

² An OSL document may contain more OWL entities (with IRIs not defined in this specification), which are ignored.

³ An OSL document has to declare all individuals having different IRIs as different from each other (except those which are ignored, see paragraph 2).

It is recommended to use the `owl:AllDifferent` OWL statement for this purpose.

⁴ Unless stated otherwise, IRIs mentioned in the following are IRIs relative to a base IRI chosen by the user being empty (which makes the IRIs absolute [W3C09]) or ending with a hash character ('#').

Map type	OWL IRI
Entity map	<code><class URI>__ENTITY_MAP</code>
Attribute map	<code><property URI>__ATTRIBUTE_MAP</code>
Identifier map	<code><class URI>__IDENTIFIER_MAP</code>
Relation map	<code><property URI>__RELATION_MAP</code>
Subtype map	<code><class URI>__SUBTYPE_MAP</code>
Translation table of attribute map	<code><property URI>__ATTRIBUTE_MAP__TRANSLATION_TABLE</code>
Translation table of subtype map	<code><class URI>__SUBTYPE_MAP__TRANSLATION_TABLE</code>

Table 3.1: OWL individual IRIs in OSL

Map type	OWL class IRI
Entity map	<code>osl:EntityMap</code>
Attribute map	<code>osl:AttributeMap</code>
Identifier map	<code>osl:IdentifierMap</code>
Relation map	<code>osl:RelationMap</code>
Subtype map	<code>osl:SubtypeMap</code>
Translation table	<code>osl:TranslationTable</code>

Table 3.2: OWL class membership of map representations in OSL

It is recommended to use that base IRI as `xml:base` XML attribute.

IRIs prefixed with `osl:` are IRIs relative to the IRI

<http://w3studi.informatik.uni-stuttgart.de/~martispp/ont#> .

⁵ An OSL document has to import the following ontology (referred to as “the OSL header” in the following):

<http://w3studi.informatik.uni-stuttgart.de/~martispp/ont/db2osl.owl>

⁶ The OWL individuals described by the OSL document representing the certain types of OBDA maps must have the IRIs specified in table 3.1 (for base IRIs, see paragraph 4). Here, `<class URI>` refers

to the OWL `class URI` field of the respective entity map for entity maps,

to the OWL `class URI` field of the associated entity map for identifier maps,

to the OWL `class URI` field of the associated entity map for subtype maps and

to the OWL `class URI` field of the entity map associated with the respective subtype map for translation tables of subtype maps.

Similarly, `<property URI>` refers

to the OWL `property URI` field of the respective attribute map for attribute maps (or, if it is empty, the value that would have been generated for it if it weren’t empty),

to the OWL `property URI` field of the respective relation map for relation maps and

to the OWL `property URI` field of the respective attribute map for translation tables of attribute maps (or, if it is empty, the value that would have been generated for it if it weren’t empty).

⁷ The OWL individuals described by the OSL document representing the certain types of OBDA maps must be of the OWL types specified in table 3.2 (for base IRIs, see paragraph 4).

⁸ The OWL properties described by the OSL document representing the fields of the certain

OBDA maps must have the IRIs specified in table 3.3 (for base IRIs, see paragraph 4).

⁹ The following OWL properties in the OSL document refer to lists of elements:

`osl:rm__sourceColumns`

`osl:rm__targetColumns`

`osl:tt__sourceValues`

`osl:tt__rdfResources`

Therefore, they have the OWL class `osl:StringListNode` as their range, as is required by the OSL header. They must connect the respective individual to an `osl:StringListNode` individual in every case. This “root node” must *not* have an `osl:hasValue` property.

If the represented list is not empty, the list elements are represented by other `osl:StringListNode` individuals connected seriatim by the property `osl:nextNode`, with the first individual being connected to the root node. The node representing the last list element must not have an `osl:nextNode` property.

All nodes except the root node *may* have an `osl:hasValue` property connecting them to their values. The actual list consists of exactly these values, thus, nodes without values are ignored. It is recommended to enumerate the node IRIs, using 0 for the root node.

Map type	Field label	Field name	OWL IRI
Entity map	E1	Table name	osl:em__tableName
Entity map	E2	Label	osl:em__label
Entity map	E3	Identifier map	osl:em__identifierMap
Entity map	E4	Attribute maps...	osl:em__attributeMaps
Entity map	E5	OWL class URI	osl:em__owlClassURI
Entity map	E6	Description	osl:em__description
Attribute map	A1	Column name	osl:am__columnName
Attribute map	A2	SQL datatype	osl:am__sqlDatatype
Attribute map	A3	Mandatory	osl:am__mandatory
Attribute map	A4	Label	osl:am__label
Attribute map	A5	OWL property URI	osl:am__owlPropertyURI
Attribute map	A6	Property type	osl:am__propertyType
Attribute map	A7	Translation	osl:am__translation
Attribute map	A8	URI pattern	osl:am__uriPattern
Attribute map	A9	RDF language	osl:am__rdfLanguage
Attribute map	A10	XSD datatype	osl:am__xsdDatatype
Attribute map	A11	Description	osl:am__description
Identifier map	I1	Entity map	osl:im__entityMap
Identifier map	I2	Attribute maps...	osl:im__attributeMaps
Identifier map	I3	URI pattern	osl:im__uriPattern
Relation map	R1	Source entity map	osl:rm__sourceEntityMap
Relation map	R2	Source column	osl:rm__sourceColumn s
Relation map	R3	Target entity map	osl:rm__targetEntityMap
Relation map	R4	Target column	osl:rm__targetColumn s
Relation map	R5	OWL property URI	osl:rm__owlPropertyURI
Subtype map	S1	Entity Map	osl:sm__entityMap
Subtype map	S2	Column Name	osl:sm__columnName
Subtype map	S3	OWL superclass URI	osl:sm__owlSuperclassURI
Subtype map	S4	Prefix	osl:sm__prefix
Subtype map	S5	Suffix	osl:sm__suffix
Subtype map	S6	Translation	osl:sm__translation
Translation table	T1	Source value...	osl:tt__sourceValue s
Translation table	T2	RDF ressource...	osl:tt__rdfRessource s

Table 3.3: OWL property IRIs in OSL

4 The db2osl software

Besides the conception of the “OBDA Specification Language” (OSL), the design and implementation of the DB2OSL software was an important part of this work. The program itself and its creation process are described in the following sections: Section [4.1 – Functionality](#) describes the functionality the program offers. Section [4.2 – Interface and usage](#) describes how this functionality is exposed to the program environment. Section [4.3 – The bootstrapping process](#) explains in detail how the bootstrapping process was realized. Section [4.4 – Architecture](#) describes the program architecture both on a coarse and a fine level. Section [4.5 – Tools employed](#) explains what tools were used to create the program. Section [4.6 – Code style](#) describes concepts and decisions that were implemented on the code level to yield clean code. Section [4.7 – Numbers and statistics](#) mentions some figures about the program. Section [4.8 – Versioning](#) gives a brief timewise TODO overview over the program development and describes important milestones. For detailed descriptions of the classes and packages of DB2OSL, refer to Appendices TODO.

Except the last section, this chapter’s sections present the information in a functionally-structured fashion: the concepts and decisions are described along with the topics they are linked to and the problems that made them arise. However, the last section, besides giving an overview about the program versions, tries to give an insight about development succession.

Unless stated differently, program version 1.0 is described (for details, see section [4.8 – Versioning](#)).

4.1 Functionality

As described in the introduction, the DB2OSL software basically is a program which automatically derives an OBDA specification from a relational database schema, which then can be used by other tools to drive the actual bootstrapping process. Its functionality is described in the next section, leaving out self-evident features, and is then listed completely in the section after that. The bootstrapping process as the core functionality of the software is described in section [4.3 – The bootstrapping process](#).

4.1.1 Description

The database schema is retrieved by connecting to an SQL database and querying its schema information. Parsing SQL specifications TODO or SQL dumps currently is not supported. The databases to derive information from can be specified by regular expressions, while there are also options to use other databases than specified or even other database servers, taken from a list of hard-coded strings. While these features may not seem to carry real benefit at

the first glance, they proved to be very useful for testing purposes, especially since the retrieval of a database schema can take some time (see TODO). For the same purpose, DB2OSL allows the processing of a hard-coded example database schema.

In addition to OSL output, a low-level output format containing information on all fields of the underlying objects is supported, which is useful for debugging (however, this feature has to be enabled via one slight change in the source code). To allow for some customization, the insertion of an own OSL header is supported (for more information on the OSL header, see the specification of the OSL language in section 3.1). If the standard OSL header is used, it is by default loaded from a hard-coded copy, so bootstrapping information from a database server running locally or from the hard-coded example schema requires no Internet connection (simply inserting the `owl:imports` statement of course would not anyway, but the generated underlying ontology is always checked for consistency with the OSL header to prevent the generation of invalid output).

The DB2OSL software can be used both in an interactive and in a non-interactive mode, while skipping a database or a database server or aborting the entire bootstrapping process is possible in either mode. Multiple database servers can be specified for a bootstrapping operation, which then are checked in order for a matching database, allowing to make use of mirrors or fallback servers. Additionally, multiple bootstrapping operations can be specified to be performed in sequence with one invocation of DB2OSL, while all features and settings previously described are enabled, disabled or set per operation. Finally, a help text can be displayed which describes the usage of DB2OSL including the description of all command-line arguments.

4.1.2 Summary

The functionality of the DB2OSL software can be summarized as follows:

- Bootstrap one or more OBDA specifications from a database schema by connecting to an SQL database server
- Specify a custom port, login and password for the database server
- Ask for passwords interactively (before starting any bootstrapping operation), hide them if desired
- Specify database names by regular expressions
- Process an arbitrary database if the specified database could not be found or unconditionally
- Connect to a database server containing example databases without having to specify any further details
- Process a hard-coded example database schema without having to specify any further details
- Use the OSL format described in section 3 – [The OBDA Specification Language \(OSL\)](#) or a detailed low-level format for output (the latter is for debugging purposes and has to be enabled in the source code)

- Write to standard output or to a file
- Insert a custom OSL header (see the specification of the OBDA Specification Language (OSL) in section 3.1 for details)
- Consistency check against a custom OSL header
- Consistency check against the standard OSL header without internet connection
- Act interactively or non-interactively
- Skip currently retrieved database (and try next on server), skip current server or abort the overall process at any time, even in non-interactive mode
- Define multiple database servers to check in order for the specified database
- Specify multiple bootstrapping operations to perform in order
- Configure the features described in the above notes per bootstrapping operation
- Display a help text describing the usage of DB2OSL, including the description of all command-line arguments

4.2 Interface and usage

This section describes the interface to the operating system and the user interface. For information on programming interfaces, see section 4.4 – [Architecture](#).

4.2.1 User interaction and configuration

Basic usage

Currently, the only user interface of DB2OSL is a command-line interface. Since the program is supposed to bootstrap the OBDA Specification automatically and thus there is little interaction, but a lot of output, this was considered ideal. Basically, one invocation of DB2OSL will initiate the automatic, non-interactive bootstrapping of exactly one OSL specification written to the standard output, a behavior which can be modified via command-line arguments. Because of its ability to write to the standard output (which is also the default behavior), it is easy to pipe the output of DB2OSL directly into a program that handles it in a Unix-/POSIX-like fashion TODO:

```
db2osl myserver.org | osl2onto myserver.org
```

(supposed OSL2ONTO is a tool that reads an OSL specification from its standard input and uses it to bootstrap an ontology from the database specified on its command line).

This scheme is known as “filter-pattern” TODO.

By inserting additional “filters”, the bootstrapping process can be customized without changing any of the involved programs:

```
db2osl mydatabase.org | customize_spec.sh | osl2onto mydatabase.org
```

(supposed `CUSTOMIZE_SPEC.SH` is a shell script that modifies a given OSL specification in the way the user desires).

Configuration via command-line arguments

The behavior of DB2OSL itself can be adjusted via command-line arguments (only). The syntax for their application follows the POSIX standard `TODO`. Most features can be configured via short options (as, for example, `-P`). To allow for enhanced readability of DB2OSL invocations, each feature can (also) be configured via a long option (like `--password`). The utilization of configuration files was considered, but for the time being seen as unnecessary complicating while not addressing any real difficulties.

The command-line arguments DB2OSL currently supports are described in table 4.1, their default values are listed in table 4.2. There is currently no switch to set the output format, since the only supported output format, besides OSL, is a low-level output format for debugging purposes. Because of this and since the change that has to be made in the source code to enable it only involves changing one token, it was preferred not to offer a command-line option for this, to not unnecessarily complicating the command-line interface for the normal, non-debugging, user.

The sole invocation of `db2osl`, without any arguments, does not initiate any processing but displays the usage directions instead, in addition to an error message pointing out the missing server argument.

Multiple bootstrapping operations or multiple servers

To perform multiple bootstrapping operations with only one invocation of DB2OSL, it is sufficient to concatenate the command-line arguments for each operation, separated by blanks, to get the final command line. However, when combining a test job with other operations, some arbitrary string has to be inserted as dummy server to allow distinguishing the different jobs and assigning each command-line argument to the appropriate job.

Likewise, to check several servers in order for the database to be used for one bootstrapping operation, these servers have to be concatenated, separated by blanks. Again, the distinction of the different bootstrapping jobs has to be possible, so all but the first operation have to have at least one command-line argument that signals the beginning of a new job definition (which is no practical problem, since to enforce this, a default argument simply can be stated explicitly without changing the behavior of the invocation).

All settings are configured per operation, so, when using a shell that separates batched commands by `;`,

```
db2osl --database employees --password itsme sql.myemployer.com
--database test myserver.org backup.myserver.org
```

is equivalent to

```
db2osl --database employees --password itsme sql.myemployer.com;
db2osl --database test myserver.org backup.myserver.org
```

Option(s)	Description, taken from the help page of DB2OSL
<code>--database, -d</code>	database name (JAVA regular expression) databases have to match to be processed; see also: <code>--loose-database-match</code>
<code>--echo-password</code>	echo input when prompting for SQL password – must be specified before <code>--password-prompt</code> to get effective
<code>--help, -h,</code>	show this help and exit
<code>--interactive, -i</code>	be interactive when choosing database
<code>--login, -L</code>	SQL login
<code>--loose-database-match</code>	if no database matching the regex specified with <code>--database</code> is found on the given server and <code>--interactive</code> is not specified for this job, use some other database
<code>--osl-header</code>	use the specified custom (non-standard) OSL header, implies <code>--remote-osl-header</code> (to import no header, specify the empty string)
<code>--output-file, -o</code>	use the specified output file (for the standard output, specify “-”)
<code>--password, -P</code>	SQL password; use <code>--password-prompt</code> to get a password prompt (if you do both, the password set via this switch will be ignored)
<code>--password-prompt, -p</code>	prompt for SQL password; a password set via <code>--password</code> is ignored
<code>--remote-osl-header, -R</code>	don’t use hard-coded version of the OSL header for verification
<code>--remote-test</code>	try to retrieve a database schema from a hard-coded list of servers and take the first one successfully retrieved (and accepted, when <code>--interactive</code> is given; note: give a dummy server if you want to do a test besides other jobs)
<code>--test</code>	use hard-coded test database schema, ignore given servers (note: give a dummy server if you want to do a test besides other jobs)

Table 4.1: Command-line arguments in DB2OSL – descriptions

Option(s)	Default value
<code>--database, -d</code>	<code>.*</code>
<code>--echo-password</code>	<code>false</code>
<code>--help, -h,</code>	<code>false</code>
<code>--interactive, -i</code>	<code>false</code>
<code>--login, -L</code>	<code>anonymous</code>
<code>--loose-database-match</code>	<code>false</code>
<code>--osl-header</code>	<code><empty string></code>
<code>--output-file, -o</code>	<code>-</code>
<code>--password, -P</code>	<code><empty string></code>
<code>--password-prompt, -p</code>	<code>false</code>
<code>--remote-osl-header, -R</code>	<code>false</code>
<code>--remote-test</code>	<code>false</code>
<code>--test</code>	<code>false</code>

Table 4.2: Command-line arguments in DB2OSL – default values

Thus, a parameter defined for one operation (like the password in the example) will have no effect on other operations. This ensures that typical errors are prevented when merging several invocations of DB2OSL into one (or vice versa) and allows for a straight-forward and comprehensive implementation.

Advanced modifications

Since OSL specifications are plain text files, a user can edit them in any desired text editor if he wants to change them in ways that go beyond the functionality DB2OSL provides or that can be achieved by scripts or programs modifying their input automatically. Because of OSL being a subset of OWL (see the specification of OSL in section 3.1), he can thereby take advantage of editors supporting syntax highlighting or other features making the handling of the respective OWL serialization more comfortable.

Moreover, every common ontology editor can be used to edit the generated OSL specification automatically or manually. Doing so, care has to be taken to make the ontology remain a conforming OSL specification. However, since the restrictions imposed by OSL are rather small and intuitive, this is easily achieved. Furthermore, upcoming tools supporting OSL (see section 5.2 – Future work) most likely will be able to check input files for conformity with the OSL definition.

4.2.2 Integration into systems

Besides the use cases described in section “Basic usage”, there are many other ways in which DB2OSL can be used. For example, a database can be periodically checked for changes that make a re-bootstrapping necessary:

```
db2osl -d mydb myserver.org | sha256sum >oldsum
cp oldsum newsum
while diff oldsum newsum; do # while checksums are the same
```

```

    sleep 3600 # wait 1 hour
    db2osl -d mydb myserver.org | sha256sum >newsum
done
rm oldsum newsum
# notify web admin via e-mail:
mutt -s "Re-bootstrapping necessary" web-admin@myserver.org

```

Another possible example is the integration of DB2OSL into a shell script that bootstraps all databases on a server:

```

regex='(?!\$).*' # accept all nonempty database names first
while db2osl -d "$regex" -o spec myserver.org; do
    dbname="` sed -ne '/xmlns:ont/ { s|./||; s|#||p }' spec `\"
    mv spec "$dbname".osl
    # don't use this database a second time:
    regex="` printf %s "$regex" | sed -e "s,\\\\\\\\$,|$dbname$,\" `\"
done

```

Newer versions than version 1.0 described here provide a command-line parameter `-a` (or, alternatively, `--all`) which makes DB2OSL bootstrap *all* databases matching the given regular expression. However, using this approach, all bootstrapped specifications will be output to one single file.

Since the programming language used to implement DB2OSL is JAVA, it is possible to deploy it on all platforms offering the JAVA RUNTIME ENVIRONMENT TODO. Additionally, it is possible to deploy it as a Web application TODO.

To simplify integration on the code level, the architecture of DB2OSL was designed to be highly modular and to cleanly separate code with different areas of responsibility into different packages (for details about the structuring of DB2OSL, see section 4.4 – [Architecture](#)). This modularity, besides facilitating understanding the code, allows for a high degree of code reusability.

For example, the packages `database`, `osl` and `specification` can be reused in other programs with little or no changes – the biggest change involves combining the database schema retrieval with the user interface of the new program to provide control over the retrieval process when reusing the `database` package (to do this, three method calls have to be replaced). If the accruing information shall be used in another way than being output or logged, this of course has to be implemented. If not, it is sufficient to replace the used `Logger` object by another one providing the desired behavior, since the `Logger` class is part of the JAVA API and widely used TODO. This is a good example of how using well-known and commonly used classes can greatly improve modularity and reusability.

4.3 The bootstrapping process

4.4 Architecture

4.4.1 Libraries used

4.4.2 Coarse structuring

TODO: overall description, modularity, extendability, ex: easy to add new in-/output formats

TODO: mapping profiles (maybe better in next subsection)

Package structuring

The 45 classes of DB2OSL were assigned to 11 packages, each containing classes responsible for the same area of operation or taking over similar roles. Care was taken that package division happened senseful, producing meaningful packages with obvious task fields on the one hand, while on the other hand implementing an incisive separation with a notable degree of decoupling. Packages were chosen not to be nested but to be set out vapidly. Since this doesn't have any functional implications [Sch14], but is rather an implementation detail, this is further explained in section 4.6.5 – Packages.

The packages are introduced and described in table 4.3. The lists of classes each package contains are given in table 4.4 in the next section 4.4.3 – Fine structuring. For a detailed package description, refer to Appendix TODO.

Package	Description
bootstrapping	Classes performing bootstrapping
cli	Classes related to the command line interface of DB2OSL
database	Classes related to the representation of relational databases and attached tasks
helpers	Helper classes used program-wide
log	Classes related to logging and diagnostic output
main	The Main class
osl	Classes representing OBDA specifications (as described in [SGH+15]) using the OBDA Specification Language (OSL)
output	Classes used to output OBDA Specifications as described in [SGH+15]
settings	Classes related to program and job settings (including command line parsing)
specification	Classes representing (parts of) OBDA specifications (as described in [SGH+15]) directly, without involving OSL
test	Classes offering testing facilities

Table 4.3: Descriptions of the packages in DB2OSL

Besides intuition, as stated, care was involved when partitioning the program into these packages, which included the analysis of the package interaction under a given structure, and the

carrying out of changes to make this structure achieve the desired pronounced decoupling with limited and intelligible dependencies.

The `main` package was introduced to make the `Main` class, which carries information needed by other packages – most prominently, the program name –, importable from inside these packages. For this, it is required for `Main` not to reside in the `default` package [Sch14].

Decoupling some of the functionality of a package into a new package – which, in a nesting package structure, most probably would have become a sub-package – and thus sacrificing the benefit of having fewer packages also played a role in some cases. Namely, `os1` is a package on its own instead of being part of the `specification` package, the `bootstrapping` classes also form a package on their own instead of belonging to the `specification` package, the classes of the `log` and the `cli` packages were not merged into one package, although logging currently exclusively happens on the command line, and the functionality of the `test` package, though containing only a few lines of code, was separated into its own package.

Even though the package structure would have become quite simpler with these changes applied – 4 out of 11 packages could have been saved this way – the first aim mentioned – meaningfulness and intuitiveness – was taken seriously and the presented partitioning was considered a more natural and comprehensible structuring, emphasizing different roles and thus being a more proper foundation for future extensions of the program. For example, because the `bootstrapping` package is central to the program and takes over TODO an active, processing role and in that is completely different from the classes of the `specification` package which on their part have a *representing* role, it was considered sensible not to merge these two packages. This undergirds the separation of concerns within the program and stresses that the functionality of the `bootstrapping` package should not interweave with that in the `specification` package, making it easier for both to stay independent and further develop into understandable and suitable units.

Package interaction

As mentioned, the structuring of the packages was driven by the aim to gain a notable amount of decoupling. How this reflected in the dependency structure, thus the classes from other packages that the classes of a package depend on, is described in the following. As was also mentioned, the information presented here also acted back on the package partitioning, which changed in consequence.

Dependencies of or on package `helpers` are not considered in the following, since this package precisely was meant to offer services used by many other packages. In fact, all facilities provided by `helpers` could just as well be part of the JAVA API, but unfortunately are not. The current dependency structure, factoring in this restriction, is shown in figure 4.1 and reveals a conceivably tidy system of dependencies.

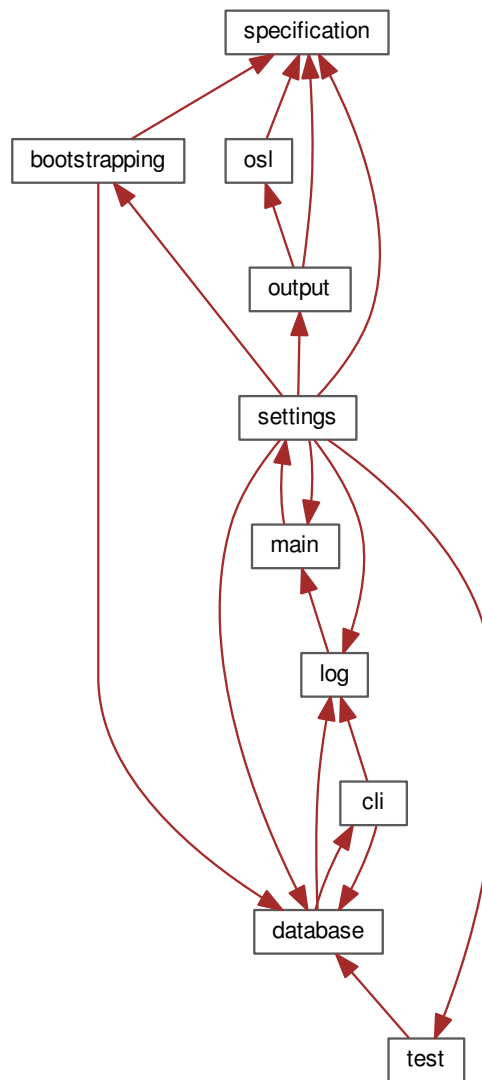


Figure 4.1: Package dependencies in DB2OSL. “→” means “depends on”.

Except for the package `settings` (which is further explained below), every package has at most two outgoing edges, that is packages it depends on. Previous versions of DB2OSL had a quite more complicated package dependency structure, depicted in figure 4.2. In this previous package structure, the maximum number of dependencies of packages other than `settings` on other packages is three, which also seems reasonably less. However, in the new structuring, `specification` has no packages it depends on and thus suits its purpose of providing a mundane and straight-forward representation of an OBDA Specification much better.

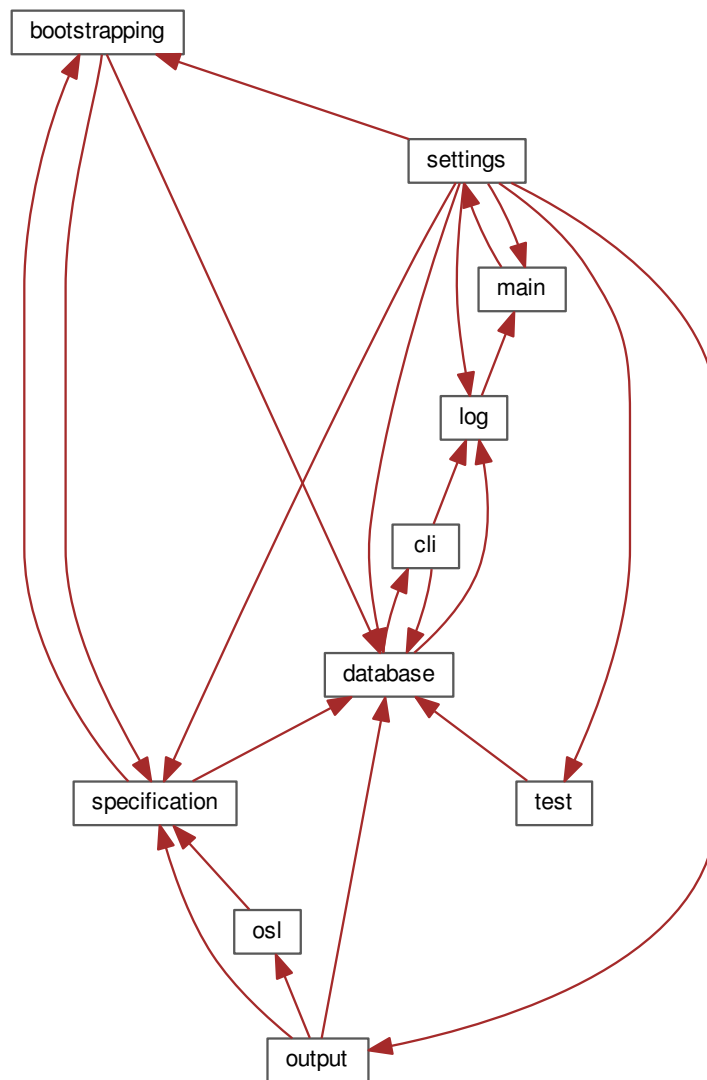


Figure 4.2: Package dependencies in earlier versions of DB2OSL. “→” again means “depends on”.

Though there still are quite a number of dependencies (to be precise: 19), many of them (8, thus, nearly half) trace back to one central package in the middle, `settings`. This may seem odd at first glance, considering that most of the edges connecting to the `settings` node are outgoing edges and only one is incoming, whereas in a design where the settings are configured from within a single package and accessed from many other packages this would be the other way round. The reason for this constellation is that, as described in section 4.2 – [Interface and usage](#), all settings in DB2OSL are configured per bootstrapping job (there are no global settings) and so `settings` contains a class `Job` (and currently no other classes), which represents the configuration of a bootstrapping job but also provides a `perform()` method combining the facilities offered by the other packages.

By this means, the `perform()` method of the `Job` class acts as the central driver performing

the bootstrapping process, reducing the `main()` method to only 7 lines of code and turning `settings` into something like an externalized part of the `main` package. If, in a future version of the program, this approach is changed and global settings or configuration files are introduced, `settings` will still be the central package, leaving the package structure and dependencies unchanged, since it either way contains information used by many other packages. This was the reason why it was not renamed to, for example, `driver`, which was considered, since at first glance it seems quite a bit unnatural to have the driver class reside in a package called “settings”.

4.4.3 Fine structuring

While the packages in DB2OSL are introduced and described in section [4.4.2 – Coarse structuring](#), the classes that comprise them are addressed in this section. For a detailed class index, refer to Appendix TODO. TODO: total classes etc.

Package contents

Table [4.4](#) lists the classes each package contains. The packages `cli`, `main`, `osl` and `settings` contain only one class each, while the by far most extensive package is `database`, containing 15 classes.

- bootstrapping
 - Bootstrapping
 - DirectMappingURIBuilder
 - URIBuilder
- cli
 - CLIDatabaseInteraction
- database
 - Column
 - ColumnSet
 - DatabaseException
 - DBSchema
 - ForeignKey
 - Key
 - PrimaryKey
 - ReadableColumn
 - ReadableColumnSet
 - ReadableForeignKey
 - ReadableKey
 - ReadablePrimaryKey
 - RetrieveDBSchema
 - Table
 - TableSchema
- helpers
 - Helpers
 - MapValueIterable
 - MapValueIterator
 - ReadOnlyIterable
 - ReadOnlyIterator
 - SQLType
 - UserAbortException
- log
 - ConsoleDiagnosticOutputHandler
 - GlobalLogger
- main
 - Main
- osl
 - OSLSpecification
- output
 - ObjectSpecPrinter
 - OSLSpecPrinter
 - SpecPrinter
- settings
 - Job
- specification
 - AttributeMap
 - EntityMap
 - IdentifierMap
 - InvalidSpecificationException
 - OBDAMap
 - OBDASpecification
 - RelationMap
 - SubtypeMap
 - TranslationTable
- test
 - CreateTestDBSchema
 - GetSomeDBSchema

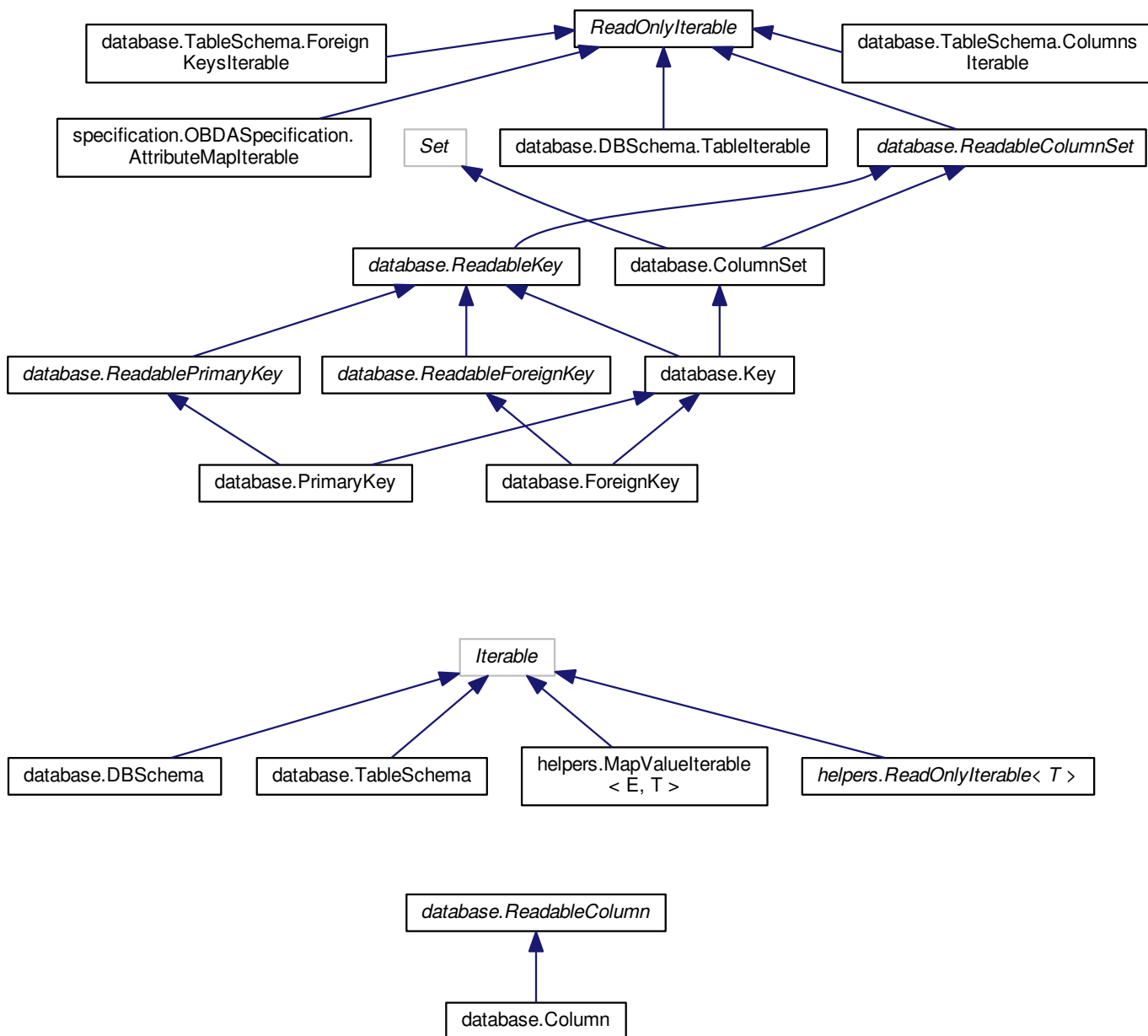
Table 4.4: Class attachment to packages in DB2OSL

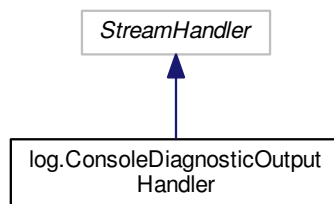
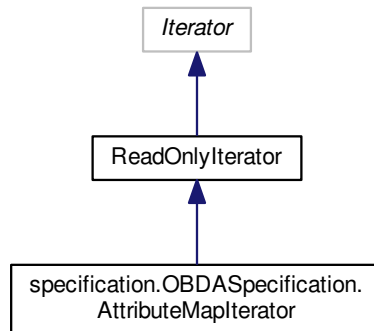
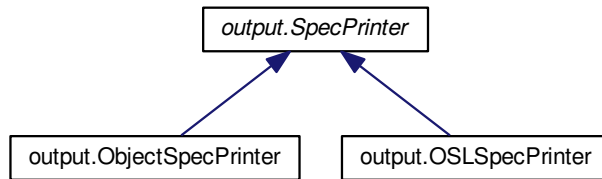
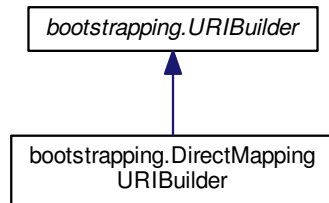
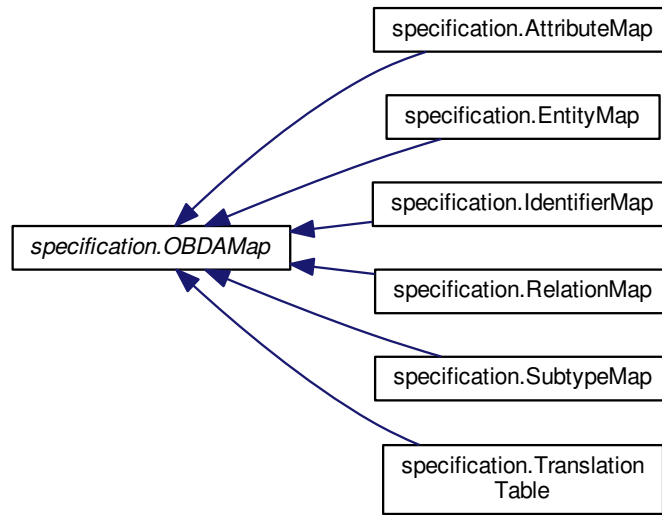
Class organization

Organizing classes in a structured, obvious manner such that classes have well-defined roles, behave in an intuitive way, ideally representing artifacts from the world modeled in the pro-

gram directly [Str00], is a prerequisite to make the code clear and comprehensible on the architectural level.

Section 4.6.4 – **Classes** as part of section 4.6 – **Code style** describes the identification and naming scheme for the classes in DB2OSL. However, it is also important, to arrange these classes in useful, comprehensible class hierarchies to avoid code duplication, make appropriate use of the type system, ease the design of precise and flexible interfaces and enhance the adaptability and extensibility of the program. Figure 4.3 shows the class hierarchies in DB2OSL, while standalone classes are listed in table 4.5.





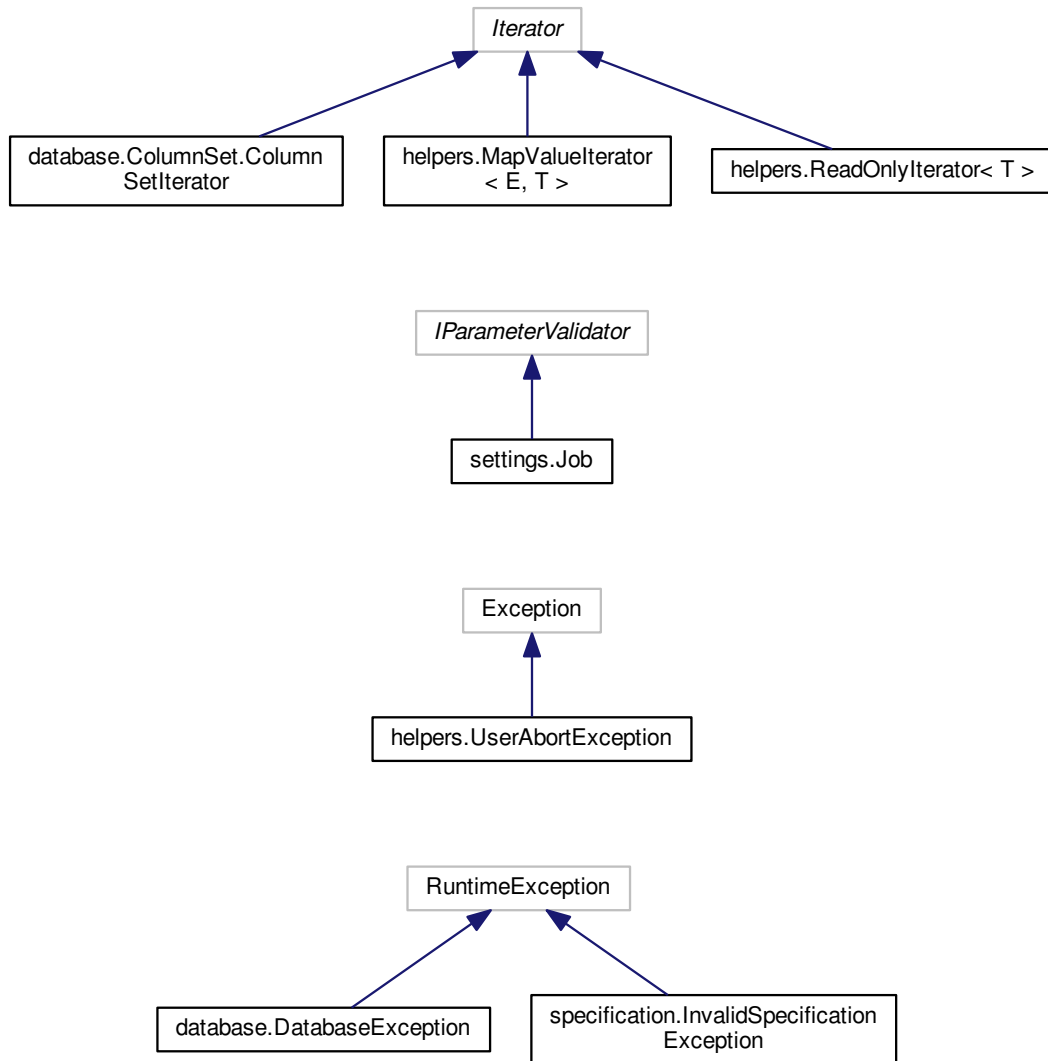


Figure 4.3: Class hierarchies in DB2OSL. Interface names are italicized, external classes or interfaces are hemmed with a gray frame.

- main.Main
- database.RetrieveDBSchema
- database.Table
- helpers.Helpers
- helpers.SQLType
- specification.OBDASpecification
- osl.OSLSpecification
- bootstrapping.Bootstrapping
- cli.CLIDatabaseInteraction
- log.GlobalLogger
- test.CreateTestDBSchema
- test.GetSomeDBSchema

Table 4.5: Standalone classes in DB2OSL

Note that every class hierarchy has at least one **interface** at its top. Classes not belonging to a class hierarchy were chosen not to be given an interface “factitiously”, which would have made them part of a (small) class hierarchy TODO. Deliberately, the scheme often recommended in the Java world TODO to give every class an interface it **implements** was not followed but the approach described by Stroustrup [Str13] to provide a rich set of so called “concrete types” not designed for use within class hierarchies, which “build the foundation of every well-designed program [Str13]” TODO. The details of this consideration are explained in section 4.6.4 – [Java interfaces](#). In fact, many useful types were already offered by the JAVA API and of course were not re-implemented.

Class `Column` with its interface `ReadableColumn` is an exception TODO in that it was given an interface although it is basically a concrete type. The reason for this is the chosen way to implement const correctness, described in section [Const correctness](#) (which is part of section 4.6.4 – [Classes](#)). This technique forced class `Column` to **implement** an interface, thus needlessly making it part of a class hierarchy, but also complicated the structure of some class hierarchies. Consider the class hierarchy around `ColumnSet`, shown in the [first graph](#) of figure 4.3. Definitely, it seems overly complicated at the first glance. But this complexity solely is introduced by the artificial `Readable...` interfaces; would JAVA provide a mechanism like C++’s `const`, this hierarchy would be as simple as in the following graph:

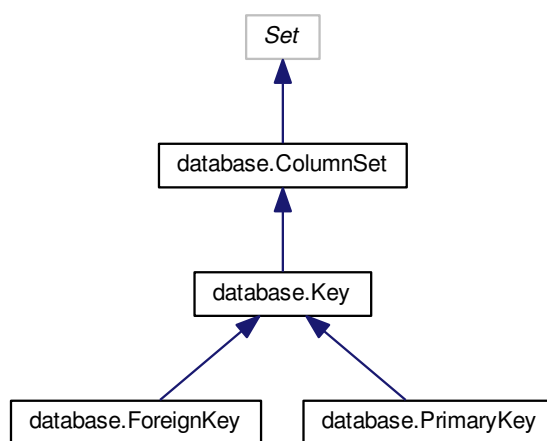


Figure 4.4: `ColumnSet` class hierarchy in DB2OSL – simplified

However, since const correctness is an important mechanism effectively preventing errors while on the other hand introducing clarity by itself, it was considered too important to be sacrificed, even for a cleaner and more intuitive class hierarchy. The fact that the `Readable...` scheme is very straight-forward and a programmer reading the documentation knows about its purpose and the real, much smaller, complexity also makes some amends for the simplicity sacrificed. The const correctness mechanism itself thereby hinders uninformed or ignorant programmers from mistakenly using the wrong class in an interface in many cases.

For more information about the program structure on the class level, see section 4.6 – [Code style](#), while for a detailed class index refer to Appendix TODO.

4.5 Tools employed

4.6 Code style

TODO: Conventions, ex.: iterators As the final system hopefully will have a long living cycle TODO and will be used and refined by many people, high code quality was an important aim. Beyond architectural issues this also involves cleanness on the lower level, like the design of classes and the implementation of methods. Common software development principles were followed TODO and the unfamiliar reader was constantly taken into account to yield clean, readable and extensible code.

4.6.1 Comments

Comments were used at places ambiguities or misinterpretations could arise, yet care was taken to face such problems at their roots and solve them wherever possible instead of just effacing the ambiguity with comments. This approach is further explained in section 4.6.2 – “Speaking code” and rendered many uses of comments unnecessary.

In fact, the number of (plain, e.g. non-JAVADOC) comments was consciously minimized, to enforce speaking code and avoid redundancy. An exception from this was the highlighting of subdivisions. In class and method implementations, comments like

```
//***** Constructors *****\
```

were deliberately used to ease navigation inside source files, but also to enhance readability: parts of method implementations, for example, were optically separated this way. Another alternative would have been to use separate methods for these code pieces, and thereby sticking strictly to the so-called “Composed Method Pattern” [Bec97], as was done in other cases. However, sticking to this pattern too rigidly would have introduced additional artifacts with either long or non-speaking names, would have interrupted the reading flow and also would have increased complexity, because these methods would have been callable at least from everywhere in the source file. Consequently, having longer methods at some places that are optically separated into smaller units that are in fact independent from each other was considered an elegant solution, although, surprisingly, this technique does not seem to be proposed that often in the literature.

Wherever possible, the appropriate JAVADOC comments were used in favor of plain comments, for example to specify parameters, return types, exceptions and links to other parts of the documentation. This proved even more useful due to the fact that DOXYGEN supports all of the used JAVADOC comments TODO (but not vice versa TODO).

4.6.2 “Speaking code”

As mentioned in section 4.6.1 – Comments, the code was tried to be designed to “speak for itself” as much as possible instead of making its readers depend on comments that provide an understanding. In doing so, besides reducing code size due to the missing comments,

clean code amenable to unfamiliar readers and unpredictable changes was enforced. This is especially important since, as described in section 4.4 – [Architecture](#), DB2OSL was designed to not only be a standalone program but also offer components suitable for reusability.

The following topics were identified to be addressed to get what can be conceived as “speaking code”:

- Meaningful typing
- Method names
- Variable names
- Intuitive control flow
- Limited nesting
- Compact code units
- Usage of well-known structures

The rest of this section describes these topics in some detail. Besides, an intuitive architecture and suitable, well-designed libraries also contribute to the clarity of the code.

Meaningful typing

Meaningful typing includes the direct mapping of entities of the modeled world to code entities [\[Str13\]](#) as well as an expressive naming scheme for the obtained types. Furthermore, inheritance should be used to express commonalities, to avoid code duplication and to separate implementations from interfaces [\[Str13\]](#).

All real-world artifacts to be modeled like database schemata, tables, table schemata, columns, keys and OBDA Specifications with their certain map types were directly translated into classes having simple predicting names like `Table`, `TableSchema` and `Key`. Package affiliation provided the correct context to unambiguously understand these names.

Method names

Assigning expressive names to methods is a substantially important part of producing speaking code, since methods encapsulate operation and as such are important “building blocks” for other methods [\[Str13\]](#) and ultimately the whole program. Furthermore, method names often occur in interfaces and therefore are not limited to a local scope, and neither are easily changeable without affecting callers [\[Sch14\]](#).

Care was taken that method names reflect all important aspects of the respective method’s behavior and

Consider the following method in `CLIDatabaseInteraction.java`:

```
public static void promptAbortRetrieveDBSchemaAndWait
    (final FutureTask<DBSchema> retriever) throws SQLException
```

It could have been called `promptAbortRetrieveDBSchema` only, with the waiting mentioned in a comment. However, the waiting is such an important part of its behavior, that this wouldn't have been enough, so the waiting was included in the function name. Since the method is called at one place only, the lengthening of the method name by 7 characters or about 26 % is really not a problem.

Variable names

To keep implementation code readable, care was taken to name variables meaningful yet concise. If this was not possible, expressiveness was preferred over conciseness.

For example, in the implementation of the database schema retrieval, variables containing data directly obtained from querying the database and thus being subject to further processing was consequently prefixed with “`recvd`”, although in most cases this technically would not have been necessary.

Intuitive control flow

Limited nesting

Compact code units

Usage of well-known structures

4.6.3 Robustness against incorrect use

Care was taken to produce code that is robust to incorrect use, making it suitable for the expected environment of sporadic updates by unfamiliar and potentially even unpracticed programmers, who besides have their emphasis on the concepts of bootstrapping rather than details of the present code anyway. In fact, carefully avoiding the introduction of technical artifacts to mind, preventing programmers from focusing on the actual program logic, is an important principle of writing clean code [Str13].

In modern object-oriented programming languages, of course the main instruments for achieving this are the type system and exceptions. In particular, static type information should be used to reflect data abstraction and the “kind” of data, an object reflects, while dynamic type information should only be used implicitly, through dynamically dispatching method invocations [Str00]. Exceptions on the other hand should be used at any place related to errors and error handling, separating error handling noticeably from other code and enforcing the treatment of errors [Str13], preventing the programmer from using corrupted information in many cases.

An example of both mechanisms, static type information and exceptions, acting in combination, while cleanly fitting into the context of dynamic dispatching, are the following methods from `Column.java`:

```
public Boolean isNonNull()  
public Boolean isUnique()
```

There return type is the JAVA class `Boolean`, not the plain type `boolean`, because the information they return is not always known. In an early stage of the program, they returned `boolean` and were accompanied by two methods `public boolean knownIsNotNull()` and `public boolean knownIsUnique()`, telling the caller whether the respective information was known and thus the value returned by `isNotNull()` or `isUnique()`, respectively, was reliable.

They were then changed to return the JAVA class `Boolean` and to return null pointers in case the respective information is not known. This eliminated any possibility of using unreliable data in favor of generating exceptions instead, in this case a `NullPointerException`, which is thrown automatically by the `JAVA RUNTIME ENVIRONMENT` if the programmer forgets the null check and tries to get a definite value from one of these methods when the correct value currently is not known.

Comparing two unknown values – thus, two null pointers – also yields the desired result, `true`, since the change, even when the programmer forgets that he deals with objects. However, when comparing two return values of one of the methods in general – as opposed to comparing one such return value against a constant –, errors could occur if the programmer mistakenly writes `col1.isUnique() == col2.isUnique()` instead of `col1.isUnique().booleanValue() == col2.isUnique().booleanValue()`. In this case, since the two `Boolean` objects are compared for identity [Sch14], the former comparison can return `false`, even when the two boolean values are in fact the same. However, since this case was considered much less common than cases in which the other solution could make programmers making mistakes produce undetected errors, it was preferred.

TODO: summary

4.6.4 Classes

Following the object-oriented programming paradigm, classes were heavily used to abstract from implementation details and to yield intuitively usable objects with a set of useful operations [AO08].

Identification of classes

To identify potential classes, entities from the problem domain were – if reasonable – directly represented as JAVA classes. The approach of choosing “the program that most directly models the aspects of the real world that we are interested in” to yield clean code, as described and recommended by Stroustrup [Str00], proved to be extremely useful and effective. As a consequence, the code declares classes like `Column`, `ColumnSet`, `ForeignKey`, `Table`, `TableSchema` and `SQLType`. As described in section 4.6.2 – “Speaking code”, class names were chosen to be concise but nevertheless expressive TODO. JAVA packages were used to help attain this aim, which is why the previously mentioned class names are unambiguous. For details about package use, see section 4.6.5 – Packages.

Care was taken not to introduce unnecessary classes, thereby complicating code structure and increasing the number of source files and program entities. Especially artificial classes, having little or no reference to real-world objects, could most often be avoided. On the other hand of course, it usually is not the cleanest solution to avoid such artificial classes entirely.

Section 4.4.3 – [Class organization](#) describes how the classes of DB2OSL are organized into class hierarchies.

Const correctness

Specifying in the code which objects may be altered and which shall remain constant, thus allowing for additional static checks preventing undesired modifications, is commonly referred to as “const correctness” TODO. TODO: powerful, preventing errors, clarity

Unfortunately, JAVA lacks a keyword like C++’s `const`, making it harder to achieve const correctness [TE05]. It only specifies the similar keyword `final`, which is much less expressive and doesn’t allow for a similarly effective error prevention [TE05]. In particular, because `final` is not part of an object’s type information, it is not possible to declare methods that return read-only objects TODO – placing a `final` before the method’s return type would declare the method `final`. Similarly, there is no way to express that a method must not change the state of its object parameters. A method like `public f(final Object obj)` is only liable to not assigning a new value to its parameter object `obj` [Sch14] (which, if allowed, wouldn’t affect the caller anyway [Sch14]). Methods changing its state, however, are allowed to be called on `obj` without restrictions [Sch14].

Several possibilities were considered to address this problem:

- Not implementing const correctness, but stating the access rules in comments only
- Giving the methods which modify object states special names like `setName--USE_WITH_CARE`
- Delegating changes of objects to special “editor” objects to be obtained when an object shall be altered TODO
- Deriving classes offering the modifying methods from the read-only classes

Not implementing const correctness at all of course would have been the simplest possibility, producing the shortest and most readable code, but since incautious manipulation of objects would possibly have introduced subtle, hard-to-spot errors which in many cases would have occurred under additional conditions only and at other places, for example when inserting a `Column` into a `ColumnSet`, this method was not seriously considered.

Using intentionally angular, conspicuous names also was not considered seriously, since it would have cluttered the code for the only sake of hopefully warning programmers of possible errors – and not attempting to avoid them technically.

So the introduction of new classes was considered the most effective and cleanest solution, either in the form of “editor” classes or derived classes offering the modifying methods directly. Again – as in the identification of classes –, the most direct solution was considered the best, so the latter form of introducing additional classes was chosen and classes like `ReadableColumn`, `ReadableColumnSet` et cetera were introduced which offer only the read-only functionality and usually occur in interfaces. Their counterparts including modifying methods also were derived from them and the implications of modifications were explained in their documentation, while the issue and the approach as such were also mentioned in the documentation of the `Readable...` classes. The `Readable...` classes can be converted to their fully-functional counterparts via downcasting (only), thereby giving a strong hint to programmers that the

resulting objects are to be used with care.

Java interfaces

In JAVA programming, it is quiet common and often recommended, that every class has at least one **interface** it **implements**, specifying the operations the class provides. TODO If no obvious **interface** exists for a class or the desired interface name is already given to some other entity, the interface is often given names like `ITableSchema` or `TableSchemaInterface`.

However, for a special purpose program with a relatively fixed set of classes mostly representing real-world artifacts from the problem domain, this approach was considered overly cluttering, introducing artificial code entities for no benefit. In particular, as explained in section TODO, all program classes either are standing alone TODO or belong to a class hierarchy derived from at least one interface. So, except from the standalone classes, an interface existed anyway, either “naturally” (as in the case of `Key`, for example) or because of the chosen way to implement const correctness. In some cases, these were interfaces declared in the program code, while in some cases, JAVA interfaces like `Set` were implemented (an obvious choice, of course, for `ColumnSet`). Introducing artificial interfaces for the standalone classes was considered unnecessary at least, if not messy.

4.6.5 Packages

As mentioned in section 4.6.4 – [Classes](#), class names were chosen to be concise but nevertheless expressive. This only was possible through the use of JAVA **packages**, which also helped structure the program.

For the current, relatively limited, extent of the program which currently comprises 45 (**public**) classes, a flat package structure was considered ideal, because it is simple and doesn't stash source files deep in subdirectories (in JAVA, the directory structure of the source tree is required to reflect the package structure TODO). Because also every class belongs to a package, each source file is to be found exactly one directory below the root program source directory, which in many cases eases their handling.

The following 11 packages exist in the program (their purpose and more details about the package structure are described in section 4.4.2 – [Coarse structuring](#)):

- `bootstrapping`
- `cli`
- `database`
- `helpers`
- `log`
- `main`
- `osl`
- `output`
- `settings`
- `specification`
- `test`

For the description of the packages, their interaction and considerations on their structuring, see section 4.4.2 – [Coarse structuring](#). For a detailed package description, refer to Appendix TODO.

Each package is documented in the source code also, namely in a file `package-info.java` residing in the respective package directory. This is a common scheme supported by the ECLIPSE IDE

as well as the documentation generation systems JAVADOC and DOXYGEN TODO (all of which were used in the creation of the program, as described in section [4.5 – Tools employed](#)).

4.7 Numbers and statistics

TODO: Retrieval times, (NC)LOC and other statistics

4.8 Versioning

5 Summary and future work

Für den eiligen Leser ist die Vorgehensweise zusammen mit den wesentlichen Ergebnissen am Schluss in einer “Zusammenfassung” klar herauszustellen. Diese soll ausführlicher sein als die “Übersicht” am Anfang der Arbeit. Auch diese Zusammenfassung soll möglichst keine Formeln enthalten.

5.1 Summary

5.2 Future work

TODO: Software processing (and validating!) OSL

Appendix

Hierher gehören zur Dokumentation Tabellen, Messprotokolle, Rechnerprotokolle, Konstruktionszeichnungen, kurze Programmausdrucke und Ähnliches.

Bibliography

- [AO08] Prince Oghenekaro Asgba and Edward E. Ogheneovo. “A Comparative Analysis of Structured and Object-Oriented Programming Methods”. In: *Journal of Environmental Management* 12.4 (2008), pp. 41–46 (cit. on p. 28).
- [Bec97] Kent Beck. *Smalltalk Best Practice Patterns*. Prentice-Hall, 1997 (cit. on p. 25).
- [BLHL01] Tim Berners-Lee, James Hendler, and Ora Lassila. “The Semantic Web”. In: *Scientific American* 284.5 (May 2001), pp. 34–43. URL: <http://www.sciam.com/article.cfm?articleID=00048144-10D2-1C70-84A9809EC588EF21> (cit. on p. 1).
- [HPZC07] Bin He, Mitesh Patel, Zhen Zhang, and Kevin Chen-Chuan Chang. “Accessing the deep web.” In: *Commun. ACM* 50.5 (2007), pp. 94–101. URL: <http://dblp.uni-trier.de/db/journals/cacm/cacm50.html#HePZC07> (cit. on p. 1).
- [Sch14] H. Schildt. *Java: The Complete Reference, Ninth Edition*. The Complete Reference. New York, NY, USA: McGraw-Hill Education, 2014. ISBN: 9780071808552 (cit. on pp. 15, 16, 26, 28, 29).
- [SGH⁺15] Martin G. Skjæveland, Martin Giese, Dag Hovland, Espen H. Lian, and Arild Waaler. “Engineering ontology-based access to real-world data sources”. In: *Web Semantics: Science, Services and Agents on the World Wide Web* 33 (2015), pp. 112–140 (cit. on pp. 1, 3, 4, 15).
- [Str00] Bjarne Stroustrup. *The C++ Programming Language*. 3rd. Boston, MA, USA: Addison-Wesley Longman Publishing Co., Inc., 2000. ISBN: 0201700735 (cit. on pp. 21, 27, 28).
- [Str13] Bjarne Stroustrup. *The C++ Programming Language*. 4th. Boston, MA, USA: Addison-Wesley Professional, 2013. ISBN: 0321563840, 9780321563842 (cit. on pp. 24, 26, 27).
- [TE05] Matthew S. Tschantz and Michael D. Ernst. “Javari: Adding Reference Immutability to Java”. In: *SIGPLAN Not.* 40.10 (Oct. 2005), pp. 211–230. ISSN: 0362-1340. DOI: [10.1145/1103845.1094828](https://doi.org/10.1145/1103845.1094828) (cit. on p. 29).
- [W3C09] W3C XML Core Working Group. *XML Base (Second Edition)*. <https://www.w3.org/TR/xmlbase/>. [Accessed: 2016-04-02]. 2009 (cit. on p. 4).

- [W3C12] W3C OWL Working Group. *OWL 2 Web Ontology Language, Document Overview (Second Edition)*. <https://www.w3.org/TR/owl2-overview/>. [Accessed: 2016-04-02]. 2012 (cit. on p. 4).
- [W3C12] TODO. *A Direct Mapping of Relational Data to RDF*. <https://www.w3.org/TR/rdb-direct-mapping/>. [Accessed: 2016-04-06]. 2012 (cit. on p. 1).

Declaration

I hereby declare that the work presented in this thesis is entirely my own and that I did not use any other sources and references than the listed ones. I have marked all direct or indirect statements from other sources contained therein as quotations. Neither this work nor significant parts of it were part of another examination procedure. I have not published this work in whole or in part before. The electronic copy is consistent with all submitted copies.

place, date, signature